

Archgard

FIREPLACES

GAS INSERT
Direct Vent / Louvers



OPTIMA 34

OPTIMA 34 with Large Flat Steel Surround & Quebec City Grey Panel Set

OPTIMA 34

Model Number: 34-DVIM34N-2

Fireplace Insert Dimensions:

25-5/8" (651 mm) W x 19-7/8" (505 mm) H x 14-1/8" (359 mm) D*

Viewing Area:

26" W x 12.5" H

Specifications	
Input Rating	
Natural Gas	23,000-34,000 BTU/hr 6.6-9.8 kW/hr
Propane	26,000-34,000 BTU/hr 7.5-9.8 kW/hr
Efficiencies	
Steady State	65.20%
P.4 Fireplace Efficiency	52.23%
Clearances	
Mantle Clearance	37" from bottom of unit to bottom of 6" mantle
Surround Side Clearance	1"

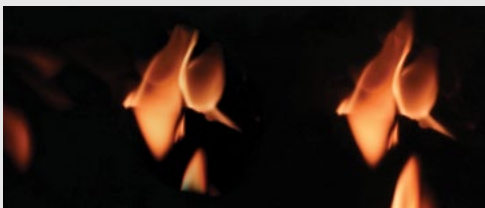
PANEL SET OPTIONS



34-BRPL-QCG /
Brick Panel,
Québec City Grey



34-BRPL-QCR /
Brick Panel,
Québec City Red



34-BRPL-RG /
Eternal Flame Reflective
Ceramic Glass



An Archgard gas insert is the optimal combination of elegance and efficiency. Whether renovating your living room, or perking up a non-traditional location, you can customize your Archgard insert to become the focal point of any room while reducing your heating bill by up to 35%.

For more information, pictures, and videos visit archgard.com

* See the manual for more information.

** All inserts come standard with barrier screens which attach to the door with very little effort.



The Archgard OPTIMA 34 is our most popular millivolt fireplace insert and is sized perfectly for the average fireplace opening. The OPTIMA 34 can be customized with multiple available options to update your home and complete any décor - all while cutting your heating costs and reducing your environmental impact.

Insert name: OPTIMA 34
Surround: 34-SKSB (Surround Kit, Small Black)
Panel Set: 34-BRPL-QCG (Québec City Grey)





Flat Steel Surrounds	Small Surround SKSB	Large Surround SKLB
Dimensions	41-1/2"W X 27-9/16"H	47-1/8"W X 30-9/16"H
Colors	B Black	



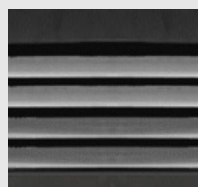
4 sided Surround	SK4SB
Dimensions	41-1/2"W X 33-7/8"H
Colors	B Black

4 sided Surround	34-LSKBLANK
Dimensions	47"W X 39"H
Colors	B Black

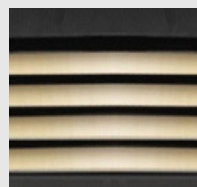
TYPES OF LOUVERS



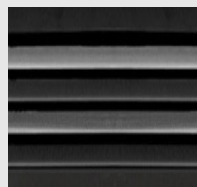
Louver kit, Brushed Nickel



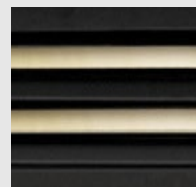
Louver kit, Brushed Nickel



Louver kit, 24K Gold Plated



Louver kit, Alternating Brushed Nickel & Black.



Louver kit, Alternating 24K Gold Plated & Black

For more information, pictures, and videos visit archgard.com

FRONTS & DOORS



Square Fronts	Harrison Mills Square Door SDSHMB	Forged Iron Front Square FIFSB / FIFSP
Dimensions	42-1/8"W x 27-7/8"H	
Colors	B Black	B Black P Pewter

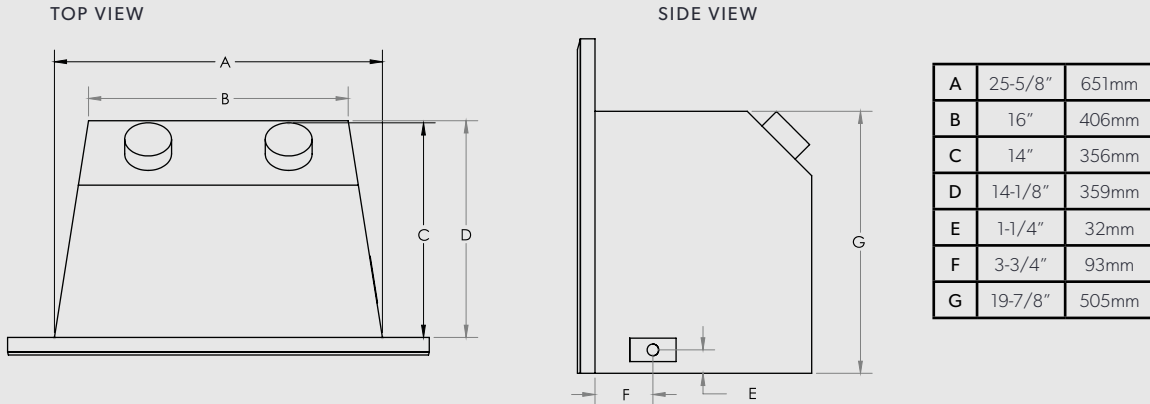


Arched Fronts	Forged Iron Front Arch FIFAB / FIFAP	Wrought Iron Front Arch WIFASDB / WIFASDP
Dimensions	42-3/8" W x 29-7/8"H (26-7/8" H to shoulder)	
Colors	B Black P Pewter	

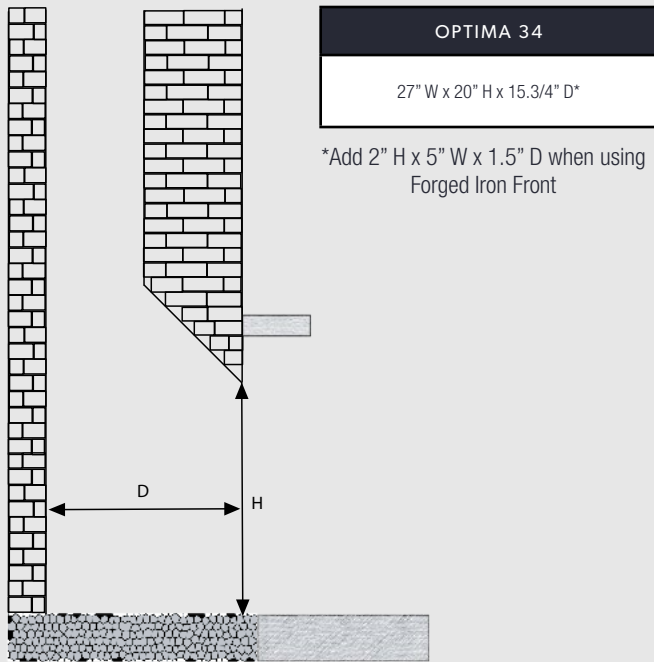
Bow Fronts (not shown)	Forged Iron Front Square, Bow Pewter FIFSBOWSDP/FIFSBOWSDB
Dimensions	42-1/8"W x 27-7/8"H
Colors	B Black P Pewter

*When installing a Forged Iron or Wrought Iron Front to an insert you must allow an extra 2" in height, 5" in width and 2 1/2" in depth.

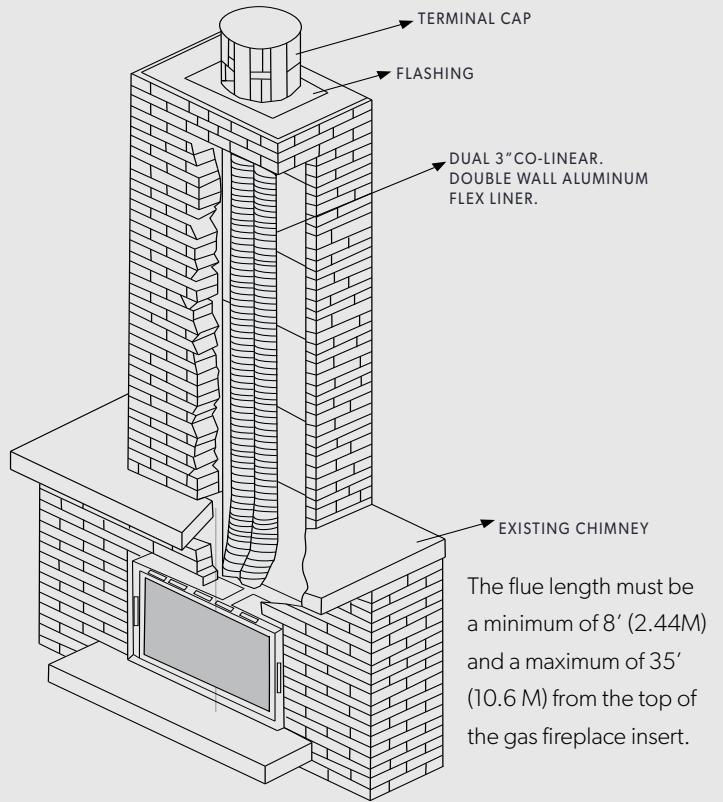
TECHNICAL DIMENSIONS



MINIMUM FIREPLACE OPENING



VENTING



**All inserts come standard with barrier screens which attach to the door with very little effort.

California Proposition 65 Warning: These products can expose you to chemicals including Carbon Monoxide, that is an externally vented by-product of fuel combustion, which is [are] known to the State of California to cause cancer, birth defects, or other reproductive harm. For more information, visit www.P65Warnings.ca.gov.



* See the manual for more information.



THE STORY OF ARCHGARD AND THE INSPIRATION OF HEATING

INSPIRATION

Fire has played a vital role throughout history, ensuring our survival. The fireplace has always held a special place in the hearts and homes in North America. It is the focal point of the home and provides the heat, light, and security we all need – especially during those cold winters and long nights with heavy snowfall and icy winds.

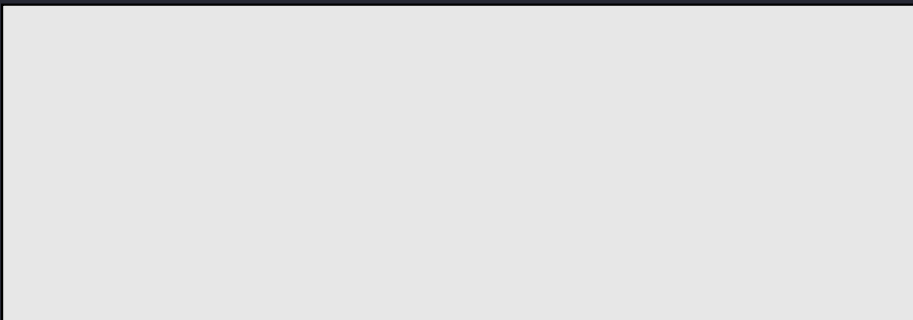
DRIVE

Passion has been the drive behind every fireplace Archgard has built since it was established over 30 years ago. Quality, modern technology, and design has been our recipe for success. Quality was our promise then, and quality is our promise today. Our fireplaces combine old traditions with modern functionality. We create products that give you the same feeling you get while sitting in front of a traditional wood burning fireplace yet satisfies even the most stringent demands for clean combustion. This all leads to the Archgard experience: enjoy your unparalleled flame with a clear conscience.



AND SO MUCH MORE....

The fireplace is no longer simply a source for heat but rather a central part of our homes. Our fireplaces are designed with clean lines and a focus on providing a perfect flame. We offer a wide range of products and accessories to meet any personal tastes. The result of our endeavors are timeless classics that form a natural gathering point in modern homes.



archgard.com